



Modern Farm House 2642-4062

Modern Farm House 2642-4062

4 Bedroom Plus Flex Room, 3 Baths, Open Family Room & Kitchen Area, Eat at Island & Breakfast Nook, Hall Desk Work Area, Kids Drop , Laundry Shoot, Connecting Utility Room to Master Closet, 2 Wood Burning Fireplaces, Front & Rear Porches, Outdoor Grill Area & Bar, 2 Car Garage & Storage.

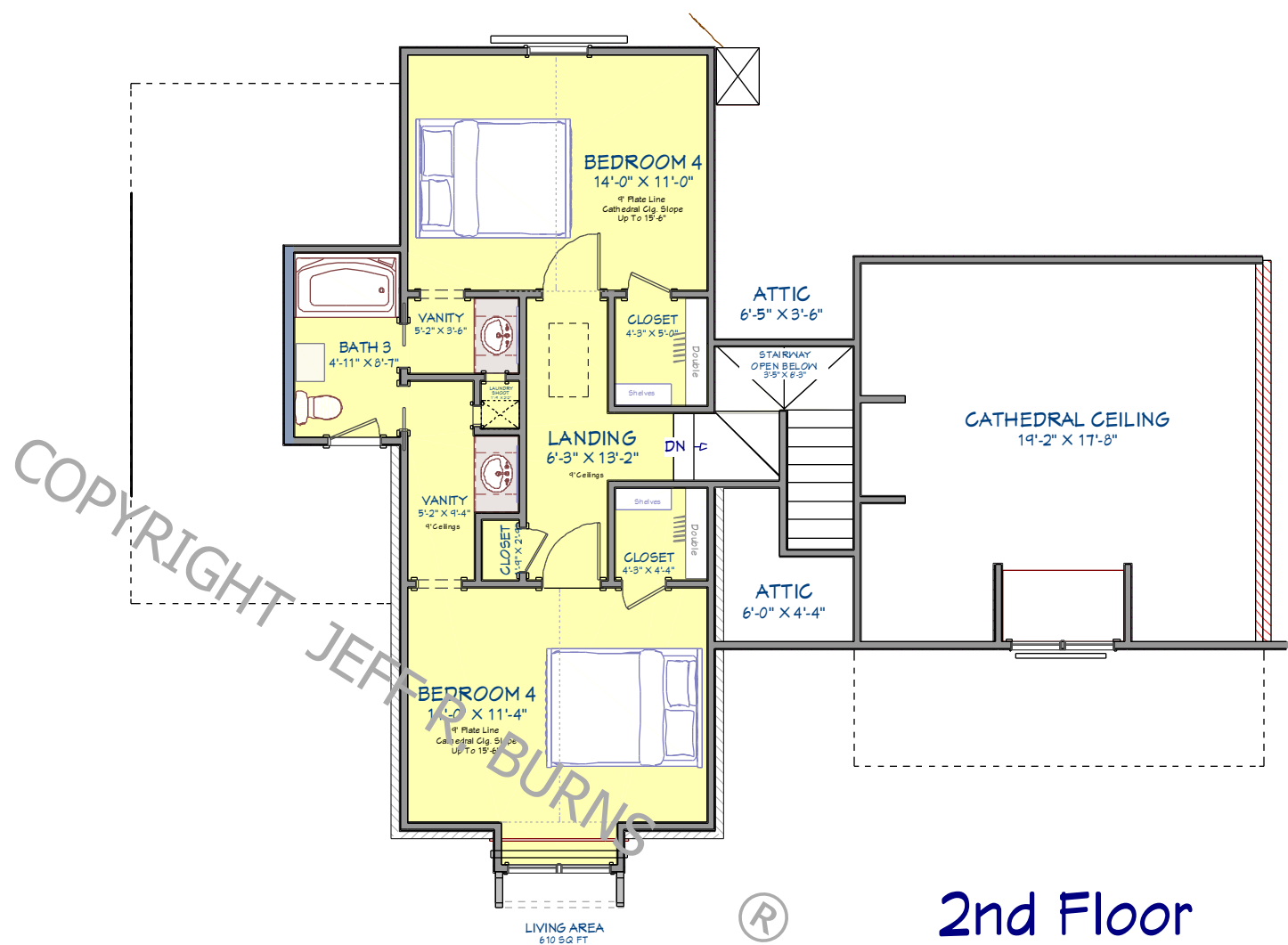
52'-8" Deep & 92' Wide

FOOTAGE TOTALS

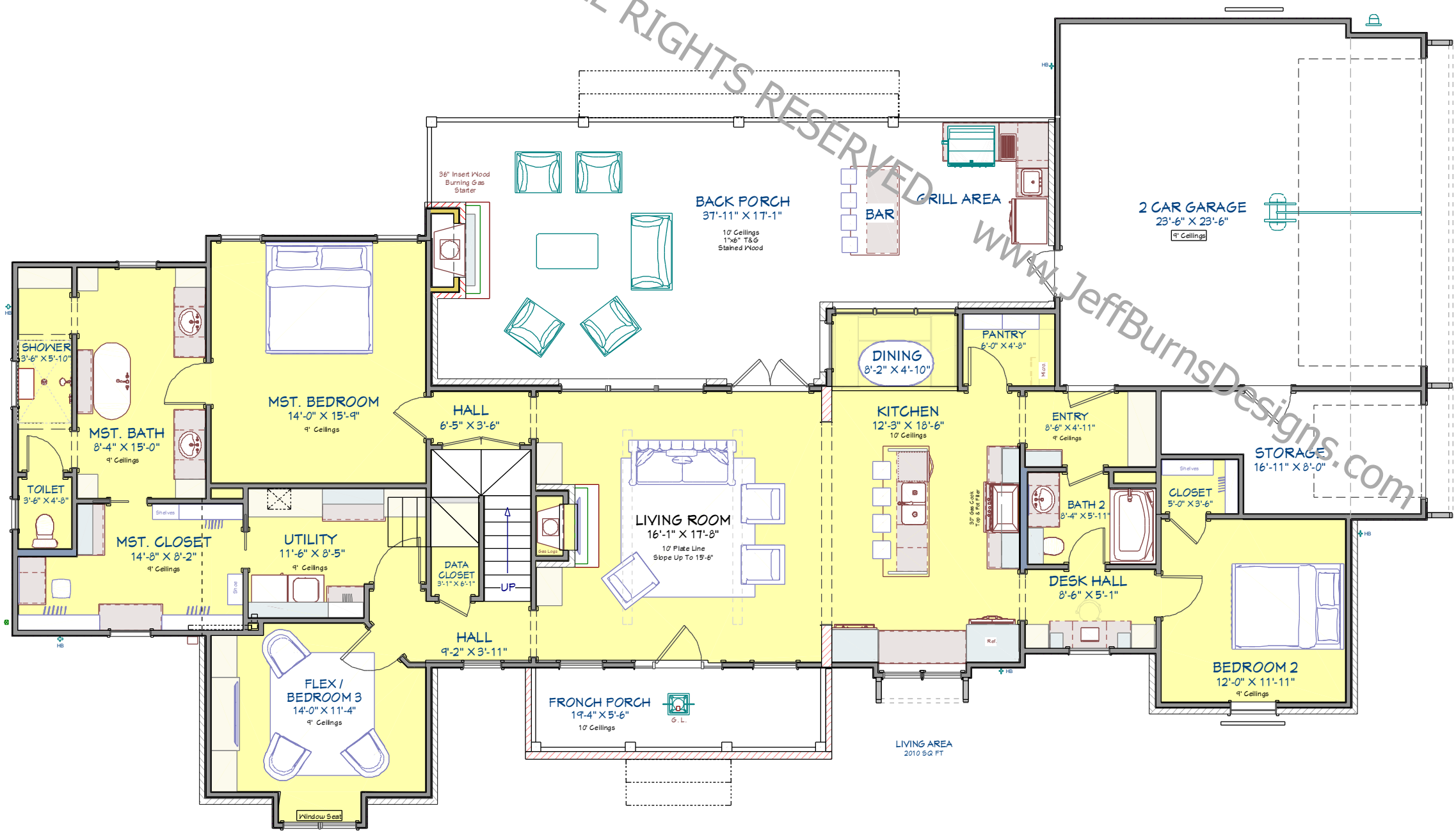
HEATED	2,642
CARPORT, STORAGE, & PORCHES	1,417
TOTAL UNDER ROOF	4,062



TOP 3D OVERVIEW



2nd Floor



1st Floor



Jeff Burns Designs

3D DESIGNS - HOME PLANS - CONSULTING
Residential & Light Commercial

LIKE US ON:

